

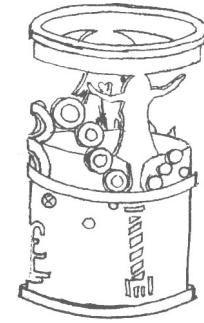
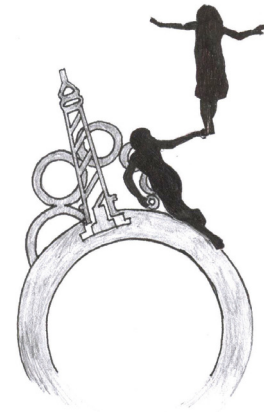
R◊WENA MURRAY

- Jewellery & Watch Design -

Van Cleef & Arpels



- Figures finished in 18K rose gold -
- Diamonds, Coral & Mother of Pearl -
- Also in white gold, Lapis & Turquoise design -

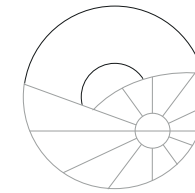


Une Journée à Paris
(2009)

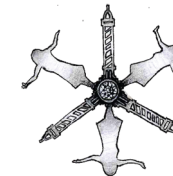
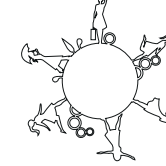


A jewellery collection featuring characters and scenes depicting a day in Paris, the birthplace of the company. Couples, children and landmarks combine to tell the stories 'Romance' and 'Wednesday' in the City of Light.

Van Cleef & Arpels



+



+



'Une Journée à Paris' (2009)

- 38mm white gold & diamonds case
- Onyx, white gold & mother of pearl dial
- Leather bracelet with white gold clasp
- Also available in rose gold version

- 'Poetic Complication'
- Automatic movement
- *Valfleurier* 24hr Module
- 60hr power reserve

A 'Poetic Complication' watch designed to complement the jewellery collection of the same name. The watch tells the story of a day in Paris, in which a rotating disc of characters pass in front of a Parisian skyline.

LINKS

L O N D O N



- White gold & Diamonds
- White gold & diamond cage
- Embroidered satin strap
- Automatic Movement



- Heart watch-charm with chain
- Synthetic Ruby crown
- Facetted white gold form
- Also designed in bracelet form



'Flutter & Wow' (2008)

Ladies watch designed as part of the 'Flutter & Wow' jewellery collection, the naming of which Rowena was also asked to contribute. The watches consist of a wristwatch with heart-shaped cage or engraved dial version, as well as a miniature charm watch to be worn as a pendant or bracelet.

Van Cleef & Arpels



Grand Prix d'Horlogerie
de Genève

Prix de la Montre Dame - 2010

- 38mm white gold & Diamond case
- Grisaille enamel dial background
- White gold bridge & characters
- White alligator leather strap

- 'Poetic Complication'
- Manual movement
- *Agénhor* Retrograde Module
- 30 Hr Power reserve



'Le Pont des Amoureux' (2010)

The assignment: to design a pair of characters, depicting a love story taking place on 'the bridge of lovers'. Particularly important were the objects which the characters hold aloft in order to indicate the time. Finally, the characters meet at 12 o'clock when the lady greets her lover with a kiss.

Accessorize



'Coquette' (2011)

- Yellow metal with cold-enamel
- Selected fabric & resin details
- Curb chain bracelet with lobster clasp

- Bracelet, pendants & earrings
- Sailing & nautical motifs
- Manufactured in the far east

The assignment: to design a set of motifs and collection of pieces under the nautical theme 'Coquette'. Designs featured motifs such as binoculars, sailboats, ropes, life-rings and the occasionally spotted blue whale.

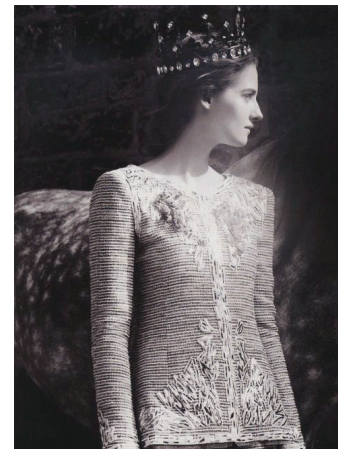
AUDEMARS PIGUET

Le Brassus



'La Vallée de Joux' (2011)

- Ruthenium-coated white gold case -
- Diamond-set external leaf motifs -
- Mother of Pearl background levels -
- Satin strap -



A 'Boutiques Edition' ladies watch design, intended as a new interpretation of the oval *Millenary* watch. The theme was inspired by 'La Vallée de Joux' in which the watch manufacture is located, such as the forests and creatures who inhabit it. Three watches were designed altogether, which depicted different times of the day and phases of light.

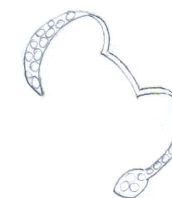
DIANE KORDAS

JEWELLERY



RHODIUM-PLATED GOLD
+ BLACK/WHITE DIAMONDS.

Collection Concepts (2013)



- Gold with black rhodium plating -
- White and black diamonds -

The brief: to design a set of pieces to sit within the 2013 collection, featuring core motifs such as starbursts. Additional motifs proposed were bats, serpents and overlapping ribbons. Additional pieces were new earcuff styles.

STEPHEN WEBSTER

LONDON



'Thorn' Necklace Concept (2014)

- Gold with black rhodium plating -
- White and black diamonds -



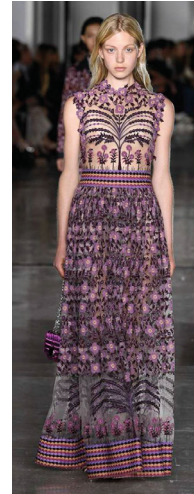
The brief: to design a statement neckpiece, which would sit within the iconic 'Thorn' collection. Taking inspiration from the overlapping forms featured in the Thorn rings, the neckpiece was composed of two interlocking necklaces which could also be worn separately.

ROWENA MURRAY



'Bramble' Neckpiece Concept (2019)

- White Gold & Diamonds -
- Half-Cut Pearls & Tsavorite Garnets -



'Bramble' Neckpiece Moodboard

You shall go to the ball! Wild yet tamed, soft yet sharp, the Bramble neckpiece elevates this most humble of shrubs to the highest of jewellery pieces. The arching curves of the white gold stems create a dynamic rhythm of pearl encrusted blackberries and garnet-set leaves. Adding an edge of contrast are delicate diamond-set thorns. Beware those who come to close...

A. LANGE & SÖHNE
GLASHÜTTE I/SA



Saxonía
- aktuell -



Saxonía
- Redesign Konzept -



Saxonía Thin
- aktuell -



A. LANGE & SÖHNE
GLASHÜTTE I/SA



passioniert - kultiviert - gewählt

Moodboard: Saxonia

"puristisch" - "elegant" - "präzision"



A. LANGE & SÖHNE
GLASHÜTTE 1/SA



"Blaues Wunder"



"Elbsandstein"

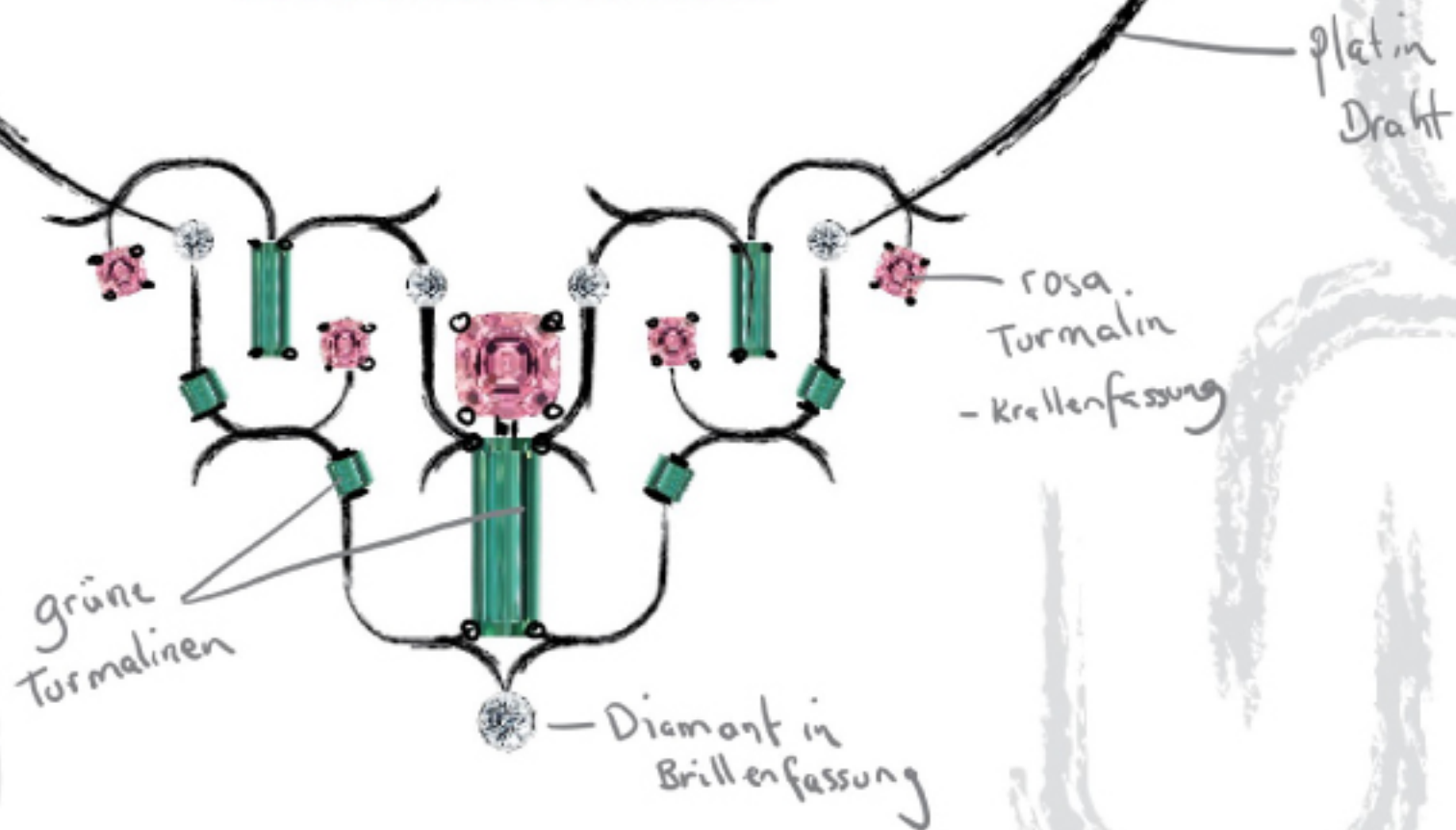


"Dresdner Grüne"

- Colourways -

WEMPE

FEINE UHREN & JUWELEN

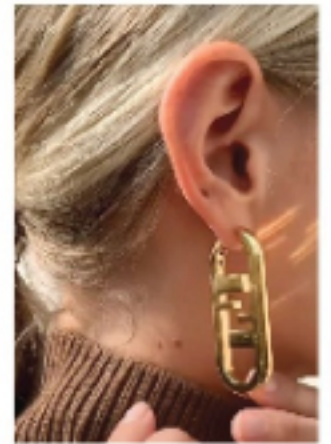


“Strauß” Collier
Haute Joaillerie Schaustück



WEMPE

FEINE UHREN & JUWELEN



'Wappenbild'



als Struktur



Die Welt von Wempe

Designrichtung



Cartier 'Tutti Frutti' Collier



Linien /
Schwungen



